

# TYPE 12 SINGLE DOOR ENCLOSURES FOR A-B FLANGE-MOUNTED DISCONNECTS

Austin Type 12 and Type 13 single door enclosures for Allen-Bradley disconnects are designed to house Allen-Bradley Bulletin 1494F disconnect devices and Bulletin 1494D circuit breaker operators.

Flange-Mounted  
Disconnect  
Enclosures



## Finish:

ANSI 61 gray polyester powder paint outside and inside. Optional panels are painted white polyester powder.

## Construction:

- 14 gauge steel.
- Seams are continuously welded and ground smooth.
- External mounting feet.
- Door and body stiffeners in larger enclosures for rigidity.
- Formed lip around all sides of enclosure opening excludes liquids and contaminants.
- Door removable by pulling continuous hinge pin.
- Print pocket included.
- Oil-resistant gasket.
- 3/8-16 threaded collar studs provided for mounting optional panel.
- Holes in body and door for mounting operating handle, operating mechanism, and door closing mechanism.
- Cover interlock bracket welded to door.
- Furnished with door latch bar for door hardware. (disconnect switch, operating handle, operating mechanism, and door hardware are not furnished with the enclosure. They must be ordered separately from the disconnect manufacturer.)
- Enclosures under 40" high require 2-point door hardware.
- Enclosures 40" high and taller require 3-point door hardware.

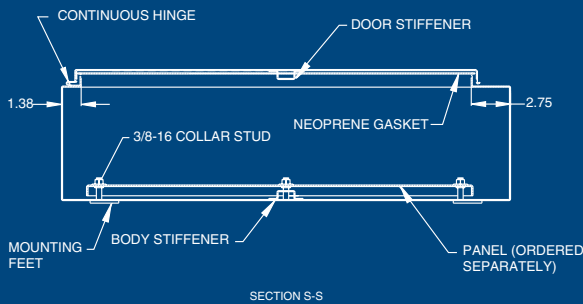
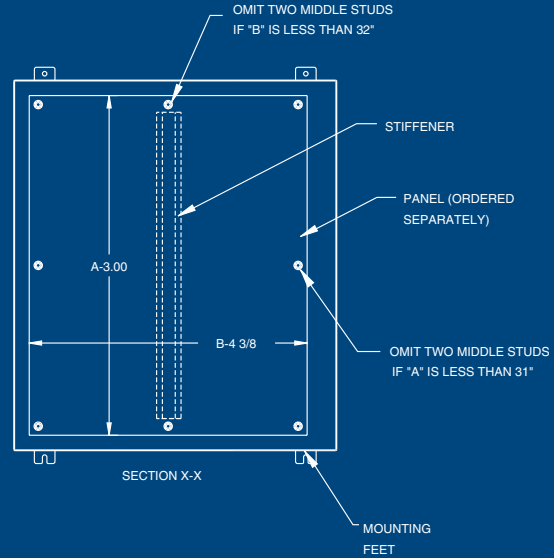
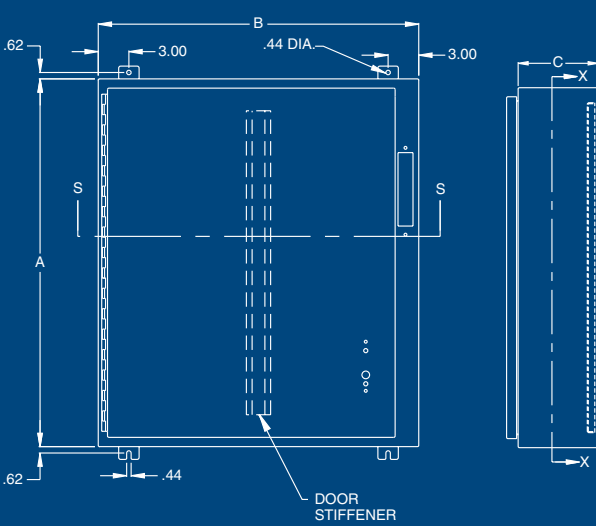
**INDUSTRY  
STANDARDS**

UL 508 Type 12  
CUL Type 12  
NEMA Type 12

Austin Electrical Enclosures  
Post Office Box 2320  
Yadkinville, NC 27055

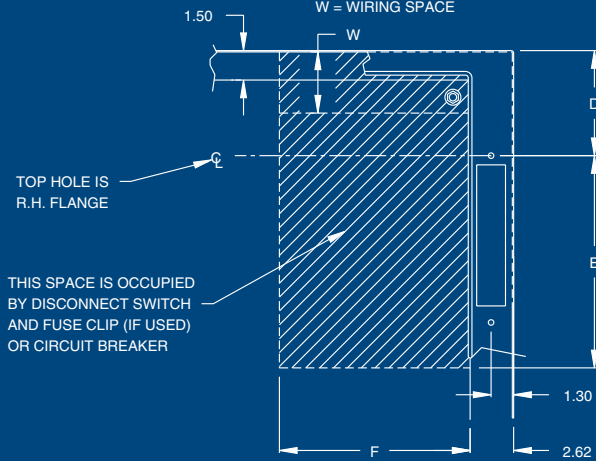
Phone: 336.468.2851  
800.288.2851

# SINGLE DOOR ENCLOSURES FOR A-B FLANGE-MOUNTED DISCONNECTS



## SPACE OCCUPIED BY DISCONNECT

NOTE: D = 3.84 WHEN C = 8.00  
 D = 6.75 WHEN C = 10.00  
 D = 9.50 WHEN C = 12.00  
 (except enclosures for 200 amp switches)  
 D = 9.50 WHEN C = 16.00  
 D = 10.50 WHEN C = 12.00  
 (for enclosures with 200 amp switches)  
 W = WIRING SPACE



Flange-Mounted  
Disconnect  
Enclosures

# TYPE 12 SINGLE DOOR ENCLOSURES FOR A-B FLANGE-MOUNTED DISCONNECTS

Flange-Mounted  
Disconnect  
Enclosures

**Type 12 Enclosures for Allen-Bradley Disconnects**

Catalog Number	Enclosure Size AxBxC	Panel Catalog Number	Panel Size Ht.xWd.	Print Pocket	Stiffener Door/Body
AB-20228N/ABDSC	20x21.38x8	AB-2020TP	17x17	Small	0 0
AB-24228N/ABDSC	24x21.38x8	AB-2420TP	21x17	Small	0 0
AB-24268N/ABDSC	24x25.38x8	AB-2424TP	21x21	Small	0 0
AB-30228N/ABDSC	30x21.38x8	AB-3020TP	27x17	Small	0 0
AB-30268N/ABDSC	30x25.38x8	AB-3024TP	27x21	Large	0 0
AB-36268N/ABDSC	36x25.38x8	AB-3624TP	33x21	Large	0 0
AB-36328N/ABDSC	36X31.38X8	AB-3630TP	33x27	Large	0 1
AB-42328N/ABDSC	42X31.38X8	AB-4230TP	39x27	Small	1 1
AB-42388N/ABDSC	42X37.38X8	AB-4236TP	39x33	Large	1 1
AB-48388N/ABDSC	48X37.38X8	AB-4836TP	45x33	Large	1 1
AB-242210N/ABDSC	24x21.38x10	AB-2420TP	21x17	Small	0 0
AB-242610N/ABDSC	24x25.38x10	AB-2424TP	21x21	Small	0 0
AB-302210N/ABDSC	30x21.38x10	AB-3020TP	27x17	Small	0 0
AB-302610N/ABDSC	30x25.38x10	AB-3024TP	27x21	Large	0 0
AB-362610N/ABDSC	36x25.38x10	AB-3624TP	33x21	Large	0 0
AB-363210N/ABDSC	36x31.38x10	AB-3630TP	33x27	Large	0 1
AB-423210N/ABDSC	42x31.38x10	AB-4230TP	39x27	Small	1 1
AB-423810N/ABDSC	42x37.38x10	AB-4236TP	39x33	Large	1 1
AB-483810N/ABDSC	48x37.38x10	AB-4836TP	45x33	Large	1 1
AB-603810N/ABDSC	60x37.38x10	AB-6036TP	57x33	Large	1 1
AB-363212N/ABDSC	36x31.38x12	AB-3630TP	33x27	Large	0 1
AB-423212N/ABDSC	42x31.38x12	AB-4230TP	39x27	Small	1 1
AB-423812N/ABDSC	42x37.38x12	AB-4236TP	39x33	Large	1 1
AB-483812N/ABDSC	48x37.38x12	AB-4836TP	45x33	Large	1 1
AB-603812N/ABDSC	60x37.38x12	AB-6036TP	57x33	Large	1 1
AB-483816N/ABDSC	48x37.38x16	AB-4836TP	45x33	Large	1 1
AB-603816N/ABDSC	60x37.38x16	AB-6036TP	57x33	Large	1 1

# SINGLE DOOR ENCLOSURES FOR A-B FLANGE-MOUNTED DISCONNECTS

## Disconnect Ordering Information:

When using a Bulletin 1494F disconnect switch, order:

- A disconnect switch (30A, 60A, or 100A)
- A fuse block adapter, if required
- Line and load connectors, if required
- Door hardware (Bulletin 1494F-L1 for 2-point latching, or Bulletin 1494F-L2 and 1494F-L3 for 3-point latching)

When using a Bulletin 1494D circuit breaker operating mechanism, order:

- A circuit breaker (C-H/Westinghouse)
- An operator mechanism
- A slide mechanism
- Door hardware (Bulletin 1494F-L1 for 2-point latching, or Bulletin 1494F-L2 and 1494F-L3 for 3-point latching)

*Allen-Bradley 1494F Disconnect Switches										Wire Bend Space Above Disconnect				
Enclosure Depth				Type Number	Amp Rating	Fuse Clip	Fuse Class	Space Occupied		When D = 3.84 W	When D = 6.75 W	When D = 9.50 W		
8.00	10.00	12.00	16.00					E	F (1)					
*	*	*	*	N30	30A	NO FUSE	NA	4.62	6.25	3.25	6.25	8.88		
*	*	*	*	NF30	30A	30A-250V	H,K,R	6.25	6.25	3.25	6.25	8.88		
*	*	*	*	NF30	30A	60A-250V	H,K,R	7.25	6.25	3.25	6.25	8.88		
*	*	*	*	NF30	30A	30A-600V	H,K,R	9.25	6.25	3.25	6.25	8.88		
*	*	*	*	NF30	30A	60A-600V	H,K,R	9.75	6.25	3.25	6.25	8.88		
*	*	*	*	NF30	30A	30A-600V	J	6.50	6.25	3.25	6.25	8.88		
*	*	*	*	NF30	30A	60A-600V	J	6.62	6.25					
										2.50	5.25	8.12		
*	*	*	*	N60	60A	NO FUSE	NA	4.62	6.25	2.50	5.25	8.12		
*	*	*	*	NF60	60A	30A-600V	H,K,R	10.38	6.25	2.50	5.25	8.12		
*	*	*	*	NF60	60A	60A-250V	H,K,R	8.38	6.25	2.50	5.25	8.12		
*	*	*	*	NF60	60A	100A-250V	H,K,R	10.88	6.25	2.50	5.25	8.12		
*	*	*	*	NF60	60A	60A-600V	H,K,R	10.88	6.25	2.50	5.25	8.12		
*	*	*	*	NF60	60A	100A-600V	H,K,R	12.88	6.25	2.50	5.25	8.12		
*	*	*	*	NF60	60A	60A-600V	J	7.75	6.25	2.50	5.25	8.12		
*	*	*	*	NF60	60A	100A-600V	J	9.75	6.25	2.50	5.25	8.12		
*	*	*	*	N100	100A	NO FUSE	NA	4.62	7.00	NA	3.50	6.25		
*	*	*	*	NF100	100A	100A-250V	H,K,R	11.38	7.00	NA	3.50	6.25		
*	*	*	*	NF100	100A	200A-250V	H,K,R	12.25	7.25	NA	3.50	6.25		
*	*	*	*	NF100	100A	100A-600V	H,K,R	13.38	7.12	NA	3.50	6.25		
*	*	*	*	NF100	100A	200A-600V	H,K,R	14.75	7.38	NA	3.50	6.25		
*	*	*	*	NF100	100A	100A-600V	J	10.12	7.00	NA	3.50	6.25		
*	*	*	*	NF100	100A	200A-600V	J	10.88	7.25	NA	3.50	6.25		

*Allen-Bradley 1494D Circuit Breaker Operators										Wire Bend Space Above Disconnect				
Enclosure Depth				Type Number	Frame Rating	Breaker Type	Frame Size (3 pole)	Space Occupied		When D = 3.84 W	When D = 6.75 W	When D = 9.50 W		
8.00	10.00	12.00	16.00					E	F					
*	*	*	*	N4/N40	150A	C-H/Westinghouse	EHD, FD, FDB, FDC, HFD, HMCP	5.81	4.31	3.25	6.12	8.88		
*	*	*	*	N5/N55	225A	General Electric	TFC, TFK, THFK	8.81	4.50	NA	5.34	8.09		
*	*	*	*	N5/N50	250A	C-H/Westinghouse	JD, JDB, JDC, HJD, HMCP	8.81	4.50	NA	5.31	8.06		
*	*	*	*	N5/N60	400A	C-H/Westinghouse	KD, KDB, KDC, HKD, HMCP	8.81	5.62	NA	5.44	8.19		

(1) The "F" dimensions does not include space for auxiliary switches. See Allen-Bradley instructions for additional space required.